



## EXPANDING Horizons

**2019**  
**ANNUAL REPORT**



*Serving Greater Waterbury  
and the Litchfield Hills*



## CONTENTS

- 1** Looking to a More Equitable Future
- 2** A Metamorphosis in Education
- 4** Pride in the Hills
- 6** Philanthropy's Future Today
- 8** Grassroots Leaders
- 11** 2019 Highlights
- 13** Community Investments
- 14** New Funds
- 16** Donor Listing
- 19** 1923 Legacy Society
- 20** Staff and Board of Directors

*On the cover: Save Girls on FYER leaders travel to summer programming funded in part through grants from Connecticut Community Foundation's Women's Giving Circle and Women's Fund.*



## OUR MISSION

To foster an equitable and inclusive community in Greater Waterbury and the Litchfield Hills by inspiring generosity, supporting organizations, and cultivating effective leaders.

## OUR VISION

An equitable, inclusive, just, and vibrant community in Greater Waterbury and the Litchfield Hills in which all residents have what they need to thrive.

## OUR VALUES

Our values guide our decision-making and actions, and reflect the culture to which we aspire. They are:

- **Equity, Diversity and Inclusion.** We welcome, invite, and commit resources toward the participation and well-being of all in our community.
- **Integrity and Transparency.** We hold ourselves to high standards of ethics, service, stewardship, and accountability to our donors, partners, and community.
- **Courage and Purpose.** We set ambitious goals, forge connections, and collaborate to address our community's needs.
- **Thoughtful Leadership.** We listen, learn, and evolve along with our community.

# Looking to a More Equitable Future

Connecticut Community Foundation spent 2019 reflecting on our past and current work, articulating the values that guide our decisions, and taking a hard look at data about community needs. Mindful of the trust donors and the broader community have placed in us, our aim was to embark on a new path toward greater impact in Greater Waterbury and the Litchfield Hills.

Research and reflection revealed a central truth: while our region boasts rich cultural opportunities, natural beauty, and an innovative spirit, far too many of our neighbors do not share fully in our community's bounty. Deep disparities mark education, health, and economic opportunity, resulting in poorer outcomes for many of our neighbors based on their race, their age, their income and wealth, and other factors. It is in the harsh reality of this inequity that we considered the Foundation's role in seeking change and in improving the quality of life throughout our community.

In late 2019, we articulated the mission, vision, and values you see on the facing page. Equity is our touchstone and the prism through which we decide how best to marshal our resources and direct our efforts to have the greatest impact.

Little did we know how soon and how urgently our new direction would be tested. In early 2020, as work on this annual report was underway, the COVID-19 pandemic hit Connecticut, exacerbating the deep disparities in our education system, in health access and outcomes, and in economic security as thousands across our region struggled to meet basic needs for food, shelter, health care, and child care. In responding to extraordinary community need, we have focused on our new mission and leaned on our values to determine how best to deploy both dollars and our staff's efforts to meet the needs of those facing the greatest challenges.

The pages that follow include the stories of people who have rolled up their sleeves to move their own visions of a brighter future and expanding horizons closer to reality. We are proud to stand with them, and are inspired by their examples.

Connecticut Community Foundation has an important role to play in listening to and amplifying community voices, addressing inequities, and pursuing change to create a better future for all. As our neighbors, we hope you will join us.



A handwritten signature in blue ink that reads "Douglas Johnson".

Douglas Johnson  
*2019 Board of Trustees Chair*



A handwritten signature in blue ink that reads "Kathy K. Taylor".

Kathy Taylor  
*2019 Strategic Planning Chair  
2020 Board of Trustees Chair*



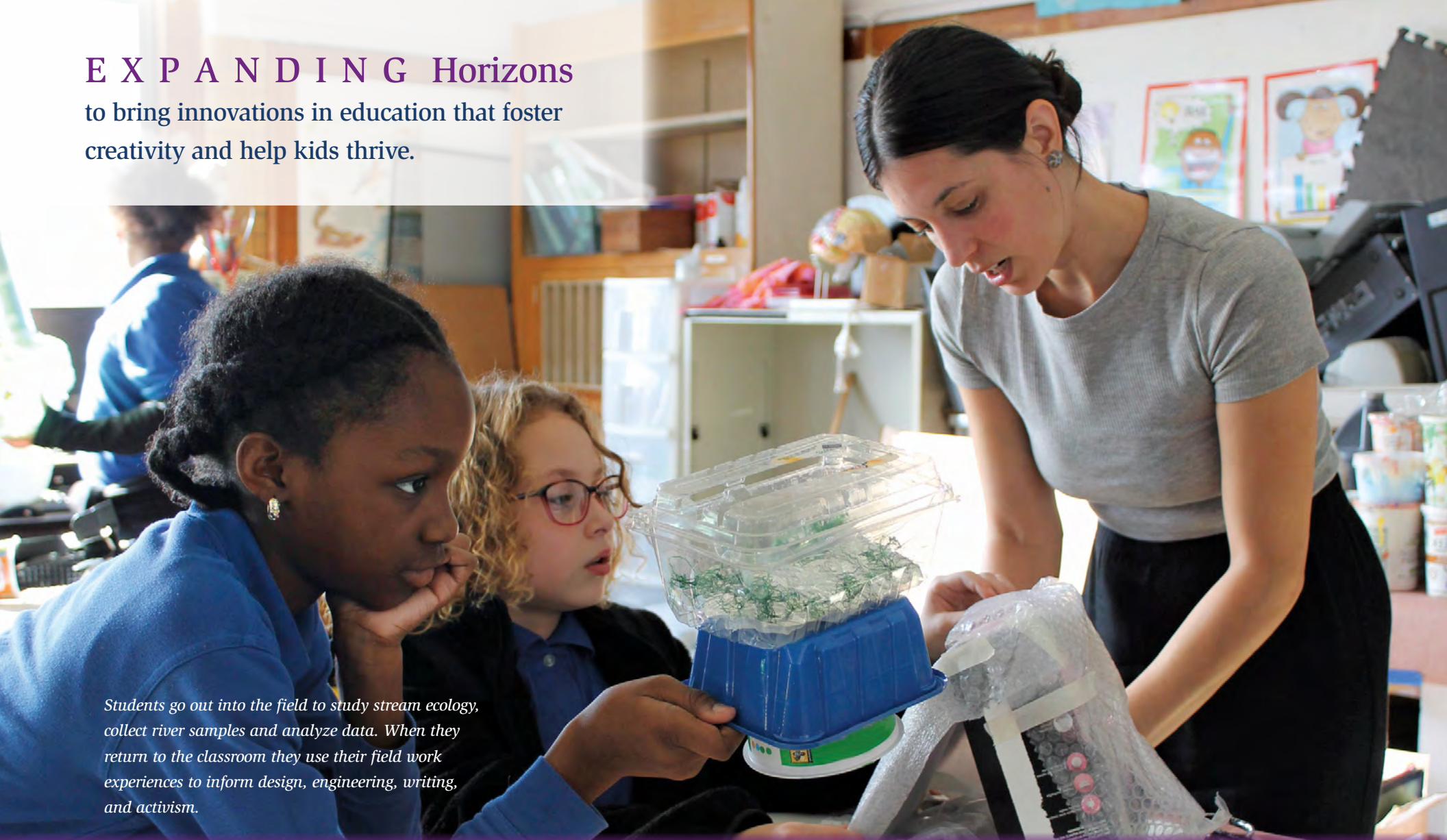
A handwritten signature in blue ink that reads "Julie Loughran".

Julie Loughran  
*President and CEO*



## EXPANDING Horizons

to bring innovations in education that foster creativity and help kids thrive.



*Students go out into the field to study stream ecology, collect river samples and analyze data. When they return to the classroom they use their field work experiences to inform design, engineering, writing, and activism.*

## A Metamorphosis in Education

For more than twenty years, students have found inspiration and opened their minds to new possibilities through literary, performing, visual and culinary arts programs offered by ASAP!. Begun as a local effort in rural communities in the Litchfield Hills, ASAP! now reaches more than 9,000 children from 100 Connecticut towns each year.

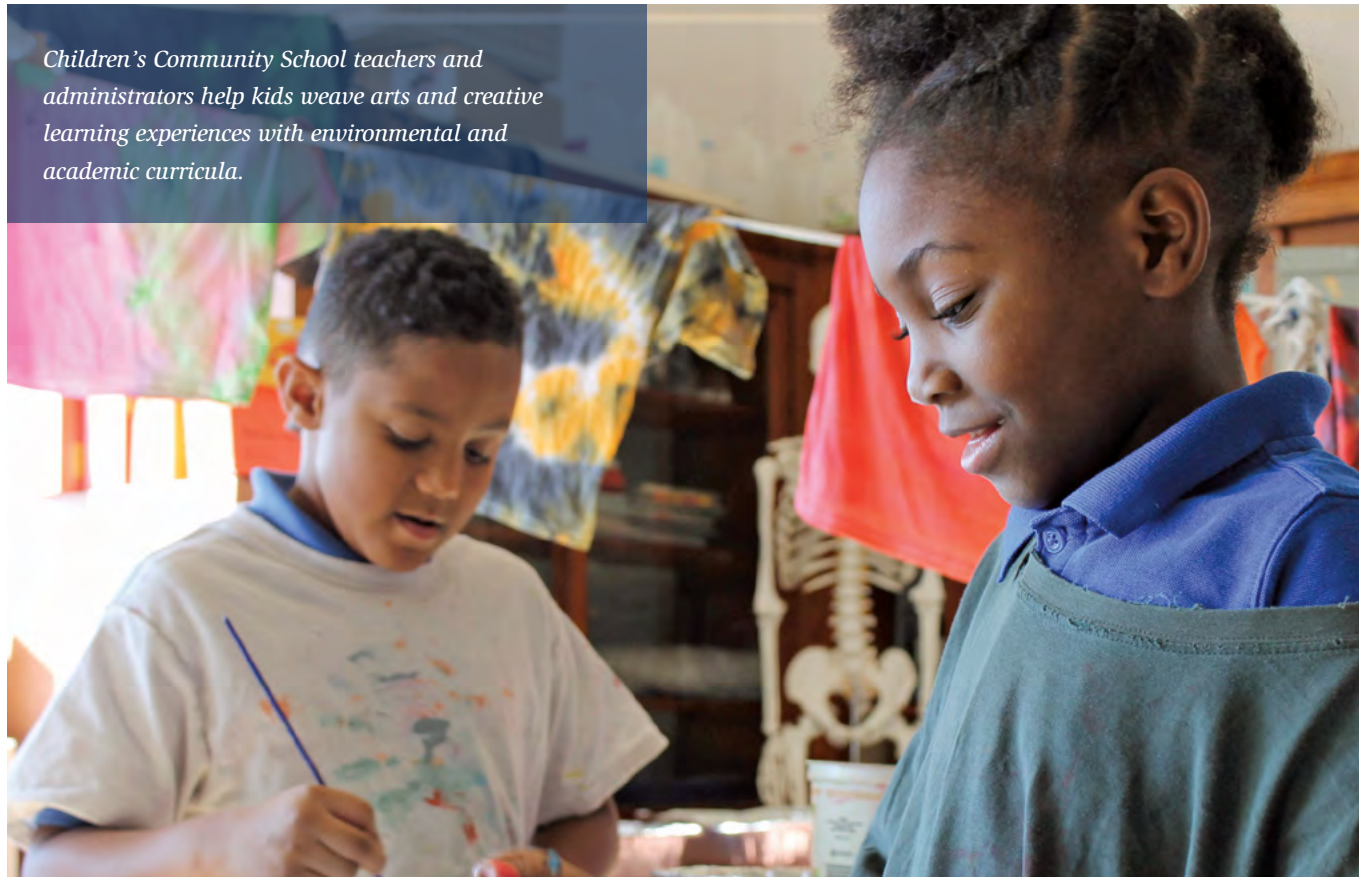


Bridging arts and academics, ASAP!'s Metamorphosis Project brings learning to the world beyond the classroom, engrossing students in creative exploration with science, math, visual arts, social studies, and ethics, and encouraging students to find a deeper understanding of nature and themselves along the way. Offered to students in the third through sixth grades at Children's Community School in Waterbury with support from a Connecticut Community Foundation grant, the program brings students outside to explore stream ecology and forest life. "We take the kids out in the field where they stock the rivers with fish. They measure the health of the stream by collecting data that the Weantinog Heritage Land Trust actually uses [to] record the health of the stream," explains JoAnne Torti, Executive Director of ASAP!. "They take this knowledge and then they bring it back to the classroom to work with our teaching artists and develop creative projects that reflect their experience in the field."

From their observations, students create drawings, maps, and visual depictions of the interconnectedness of plants and animals within an ecosystem. Grade-specific projects integrating art, design, and engineering consider not only the science of nature, but the connections between humans and the natural world. To cap the program, students share their findings at a large expo for the school community.

Metamorphosis Project invites students to explore and express their own interests and emotions, alongside the academic content. "It's messy. We're messy," Torti said. "But there's

*Children's Community School teachers and administrators help kids weave arts and creative learning experiences with environmental and academic curricula.*



organization in the chaos . . . so we invite all of that. We don't say leave your emotions out the door. We say bring everything into the classroom because this is how we're going to work." With that approach, Metamorphosis Project fosters not only the students' educational growth, but their

personal growth as well. In the words of a student who participated in the program over several years, "I learned to look at the world from a touchpoint of creativity and realized that that spark is what really helped me progress."

*"It's messy. We're messy, but there's organization in the chaos . . . so we invite all of that. We don't say leave your emotions out the door. We say bring everything into the classroom because this is how we're going to work."*

## EXPANDING Horizons

to build a movement that improves the lives of LGBTQ people.



## Pride in the Hills

In 1988, one Massachusetts student's courage to confide in his teacher set in motion a chain of events that is bringing change and opportunity for LGBTQ youth in Greater Waterbury and the Litchfield Hills today.

That student shared with his teacher, Kevin Jennings, that he was gay, and struggling with keeping that fact a secret. Realizing he couldn't fully support his student while remaining closeted himself, Jennings came out to the school community. Shortly after, when a straight student approached him about wanting to improve communication and understanding between straight and LGBTQ students, they formed the nation's first Gay-Straight Alliance (now also known as Genders and Sexualities Alliances, or GSA), a program that soon spread clubs to schools across the country. Having launched a national movement, Jennings—now CEO of Lambda Legal, a national organization advocating for the civil rights of LGBTQ people and people living with HIV—still kept his eye on local needs.

When he moved to Southbury, Jennings was troubled by challenges facing LGBTQ youth in the community around him. "We know that when young people are isolated, [they] are at risk," he said. "LGBTQ young people in Connecticut are four times more likely to attempt suicide than non-LGBTQ young people. And I wanted to do something about that."

Jennings found others who shared his concerns, and eventually teamed up with Deb Fuller of Woodbury and Christopher Herrmann of Washington to create the Pride in the Hills Fund at Connecticut Community Foundation. The fund aims "to celebrate and improve the lives of lesbian, gay, bisexual, transgender and queer/questioning (LGBTQ) people in Greater Waterbury and the Litchfield Hills for generations to come." To meet that bold goal, the trio knew they would need money.





(Facing page, Left-right) Kevin Jennings, Deb Fuller, and Christopher Herrmann lead the Pride in the Hills Fund, which has sparked tremendous generosity to benefit LGBTQ people throughout Greater Waterbury and the Litchfield Hills.

(This page) Pride in the Hills Festival was held on Saturday, June 15, 2019 at Spring Hill Vineyards in Washington Depot. Below, C.C. White & Julian Fleisher perform at the 2019 Pride in the Hills Festival.

*“Having a weekend where they can go to a place where they’re safe, where they feel like they belong, and where they’re not a minority maybe for the first time . . . can be a life changing experience.”*

Tapping into Herrmann’s experience and networks as a filmmaker and producer, a team of volunteers poured their efforts into “Pride in the Hills,” an outdoor festival held during Pride Month in June that drew hundreds of people. Speaking of what had been an untapped audience for such an effort, Jennings reflected that, “it’s kind of astounding and it shows that this community is extremely supportive of each other . . . and it wasn’t just the gay community. . . I would say half the people at the event were straight and so excited to be there.”

Pride in the Hills raised an astounding \$150,000, which will be used to support programs benefiting the LGBTQ community, and particularly youth. A volunteer committee formed to recommend grants from the fund has already created a scholarship

for LGBTQ students and their allies, and envisions supporting GSAs in local schools and enabling students throughout the region to attend the annual True Colors Conference in Hartford, the largest LGBTQ youth conference in the country. At the conference, they hope students will find a place they feel they belong. Said Jennings, “LGBTQ youth hear anti-LGBTQ comments every day at their schools. They spend their days in a place where they are constantly reminded that they’re a minority, where they’re constantly reminded that they’re outsiders, where they’re constantly being put down. Having a weekend where they can go to a place where they’re safe, where they feel like they belong, and where they’re not a minority maybe for the first time . . . can be a life changing experience.”





## EXPANDING Horizons

to inspire young people to become impactful philanthropists in their community.

*Ahmad Abojaradeh (They/Them), Founder and Executive Director of Life in My Days, Inc. and CT Mutual Aid. They serve on the boards of the National Association of Peer Supporters and Translifeline. Ahmad is dressed in traditional Palestinian garb, from which they draw inspiration and empowerment.*

## Philanthropy's Future Today

Among the many myths about the Millennial generation is that they are less engaged than their Baby Boomer and Generation X predecessors. In the world of philanthropy, that myth could not be further from the truth.



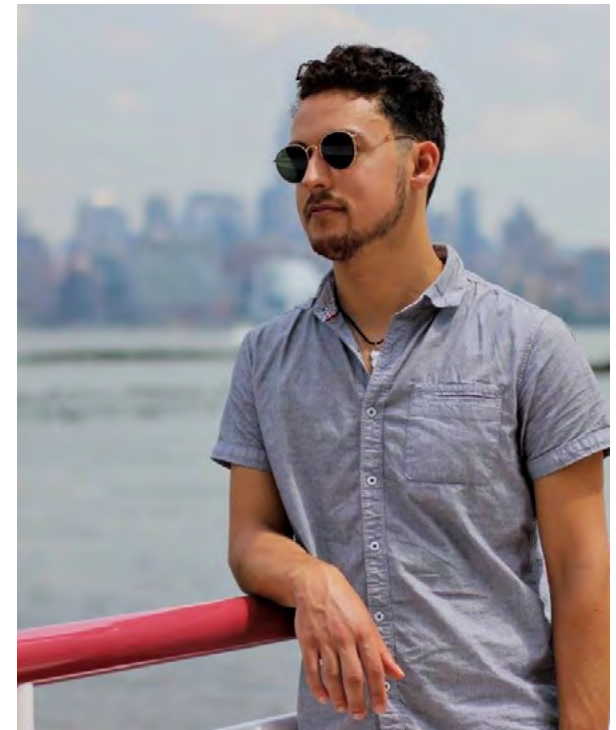
In fact, a majority of Millennials—defined by the Pew Research Center as those born between 1981 and 1996—make charitable gifts each year. As they gain disposable income, pay off student loans, and build wealth, they are poised to become the most generous generation in history. More likely than their older counterparts to prioritize social causes over connection to particular institutions, Millennial donors are characterized by a belief that things can be better, and by a conviction that everyday actions matter—values that have earned them the nickname the “Impact Generation.”

Twenty-seven-year-old Waterbury resident Ahmad Abojaradeh puts a local face on this emerging generation of donors. Ahmad—who recently established a donor-advised fund at Connecticut Community Foundation—absorbed early on the importance of giving. They learned from their mother that “giving is a lifelong practice, regardless of what you have.” Though they were experiencing poverty as a displaced family themselves, the Abojaradeh family’s doors were always open to others in need. Reflecting on why they give, Ahmad explained that “life is too short to live it without communal and restorative support systems. My experiences are not unique. They are in line with statistics of philanthropy that show that

the biggest givers...are the individuals who are not fully financially secure but recognize the need and value for every human being out there.”

Research shows that younger donors are often attuned to social inequities, focused on supporting systemic change, and apt to challenge foundations and other traditional funders to listen to a broader range of voices and invest in sustainable solutions. Ahmad—who is the founder and executive director of Life in My Days, Inc., a Waterbury-based nonprofit organization dedicated to supporting individuals and communities on their journeys to self-actualization—embodies this shift. They envision using their donor-advised fund “to support organizations that are working towards equity and justice through the lens of the lived experience ‘of the most marginalized and for the most marginalized,’ in particular organizations that don’t fit the typical norm of who and what has been funded traditionally. I chose Connecticut Community Foundation for the fund because I believe equitable funding begins at the community level and want the funds to go to my community.”

Believed to be the youngest fund founder in the Foundation’s history, Ahmad—like many in their generation—wears the hats of community leader, change agent, activist, as well as philanthropist.



*Ahmad’s work centers on lived experience and focuses on indigenous storytelling, transformative justice and wellness. Beyond their work, Ahmad has traveled to over 50 countries and written over a dozen novels.*

The Foundation looks forward to working with more and more members of the Impact Generation as they follow Ahmad’s lead in aligning their giving with their own visions of a better future.

*“My experiences are not unique. They are in line with statistics of philanthropy that show that the biggest givers...are the individuals who are not fully financially secure but recognize the need and value for every human being out there.”*



## EXPANDING Horizons

to support leaders and change agents at the grassroots level.



*Roslyn Sotero presents to over fifty Waterbury leaders on how to use online marketing and communication tools.*

*(At left) Community leaders and members of the Grassroots Grants Committee gather to share ideas and hopes for Waterbury at an annual New Year celebration.*

## Waterbury Leaders Build Community and Make Change

Progress within a community often depends not on big institutions with one-size-fits-all solutions, but on local leaders who are responsive to residents and who can mobilize their neighbors to pursue a shared vision of meaningful change. Inspired by many Waterbury leaders doing work that reflects the unique needs of their neighborhoods, in 2016 Connecticut Community Foundation established a grassroots leadership program to support Waterbury residents working to help the city and its people thrive.





The program began by offering small grants to individuals and small nonprofit organizations to support community events and learning opportunities that highlighted important issues and strengthened bonds among people with shared interests or experiences. Today, it also supports organizing, advocacy, and community building, and aims to grow equitable efforts that revitalize communities, influence local systems, and foster youth leadership.

Grassroots Grant applications are reviewed by a committee made up of Waterbury residents, who meet with each applicant to learn more about the goals of their work. In addition to grants, the program now offers training and networking opportunities to encourage leaders from across the city to share ideas, tools, and tactics.

Reflecting on the importance of fostering local leaders, Ruth Glasser, a Waterbury resident, Grassroots Grants inaugural and former committee member, and professor of Urban Planning at the University of Connecticut-Waterbury, says, “The people and organizations that have lived experience within a location are vital to the health of our communities because they are more likely to be personally invested in seeing that area thrive.”

Projects funded with Grassroots Grants have ranged from the creation of a community garden to programs that give parents tools to advocate for their children in the schools.

One grant supported monthly meetings of

the Bouley Manor Neighborhood Association to coordinate the beautification, clean up and maintenance of the Association’s various neighborhood Adopt-a-Spot locations, including the delivery of potted flowering plants to the front porches of home-bound neighbors. Another supported the organization of a Waterbury chapter of Girl Trek, which encourages African-American women to walk together not only as a means of healthy living, but also to mobilize community members around local issues.

Another grant helped Calvin Dunbar Jr. launch Destroying The Chains, a nonprofit that helps people with criminal records navigate the process of securing a free pardon, which can be critical to restoring employability following a conviction. Dunbar recalls hardship following his own incarceration and the help he received. He notes, “I want to give people the resources that I didn’t think I had. A lot of people are going to lawyers, spending thousands of dollars for help, but I do it for free. The most that they are spending is \$100 and that’s just to get their records and fingerprints. ... I want to show them that you can do it. You can get a job.”

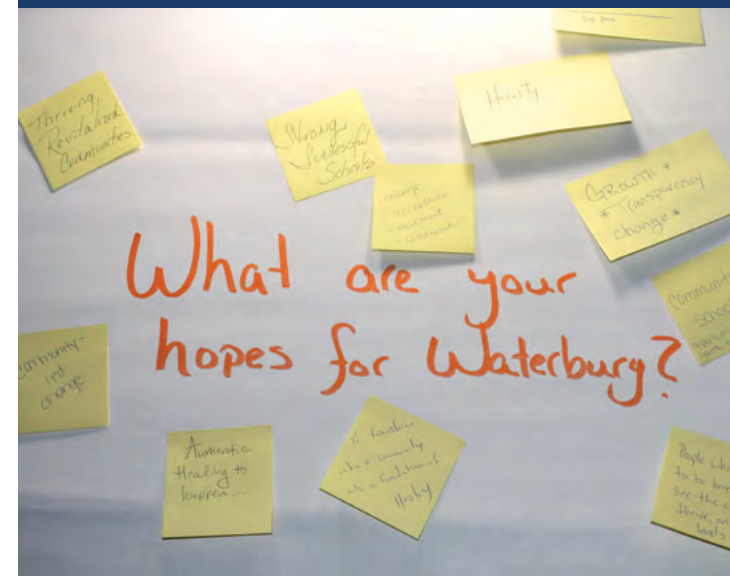
Local leadership is a critical catalyst for more equitable, healthy, and resilient communities. Connecticut Community Foundation is proud to support Waterbury leaders as they shape their community, engage their neighbors, and make their voices heard.

*“The people and organizations that have lived experience within a location are vital to the health of our communities because they are more likely to be personally invested in seeing that area thrive.”*



(Above) Historic Overlook Community Club planted new trees in Fulton Park. The trees were purchased with a grant from Connecticut Community Foundation’s Grassroots Grants program for community building events.

(Below) Waterbury residents and leaders share their aspirations for 2020 at a community building event.









CONNECTICUT COMMUNITY FOUNDATION RECEIVED

**\$4,751,412\***

IN CHARITABLE GIFTS TO BE USED TODAY  
AND LONG INTO THE FUTURE

\*Includes nonprofit agency funds

COLLEGE WAS MORE AFFORDABLE FOR **400** STUDENTS

THANKS TO SCHOLARSHIPS TOTALING MORE THAN  
**\$900,000** AWARDED BY CONNECTICUT COMMUNITY  
FOUNDATION FOR THE 2019-20 ACADEMIC YEAR

DURING THE 2019 **GIVE LOCAL** EVENT **\$1,353,922**  
WAS RAISED FOR **268** PARTICIPATING NONPROFITS  
WITH **4,494** INDIVIDUALS DONATING ONLINE IN 36 HOURS

THE FOUNDATION DISTRIBUTED **\$4 Million** IN GRANTS  
TO MORE THAN **470** DIFFERENT COMMUNITY PARTNERS

In  
2019

THE FOUNDATION  
WELCOMED **350** NEW DONORS  
AND **20** NEW FUNDS



*Women's Giving Circle members learn more about Girls Who Code from Waterbury Youth Services staff and youth participants.*

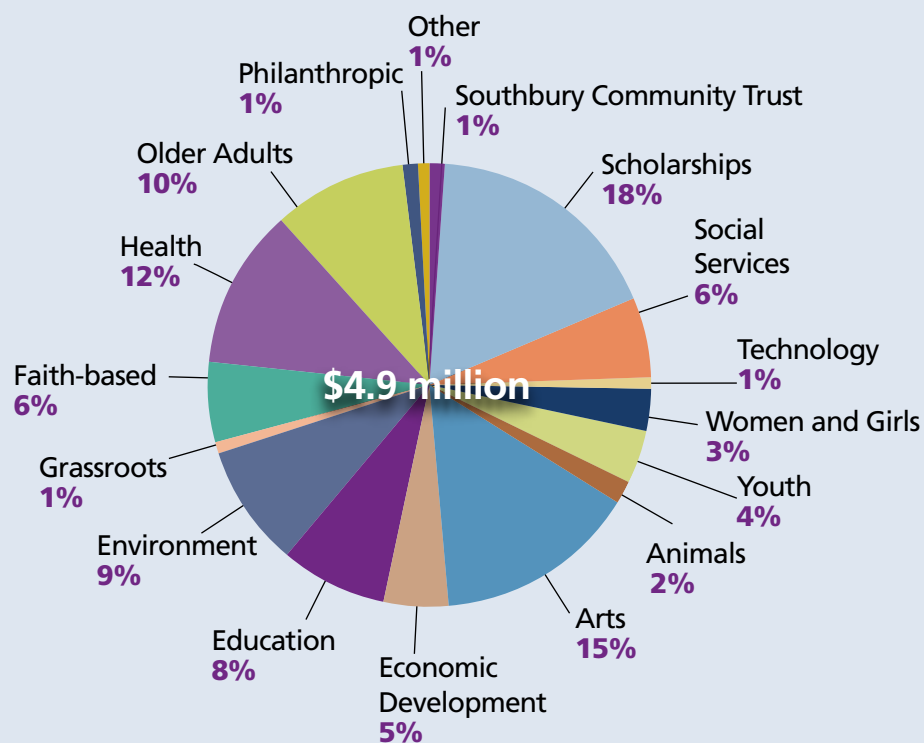




# Community Investments

Connecticut Community Foundation serves donors and nonprofits through sound financial management that aims to build the charitable resources available to the community.

## 2019 Grants and Scholarships by Program Area



Figures include competitive grants, grants designated by donors through charitable funds they have established, and gifts through Give Local.

2019

### Assets

Investments	\$116,842,774
Other Assets	4,373,031
<b>Total Assets</b>	<b>\$121,215,805</b>

### Liabilities and Net Assets

Accounts Payable	\$ 80,446
Liabilities Under Split-interest Agreements	172,874
Funds Held as Agency Endowments	5,187,905
<b>Net Assets</b>	<b>115,774,580</b>
<b>Total Liabilities and Net Assets</b>	<b>\$121,215,805</b>

### Revenue

Contributions	\$ 4,751,412
Investment Return	19,126,085
Other Revenue	188,161
<b>Total Revenues</b>	<b>\$ 24,065,658</b>

### Grants and Expenses

Grants and Scholarships	\$ 4,892,277
Program Support	1,381,179
Supporting Services	896,306
<b>Total Grants and Expenses</b>	<b>\$ 7,169,762</b>

### Net Assets

Beginning of Year	\$ 98,878,684
End of Year	\$115,774,580

For a complete copy of CCF's 2019 audited report and tax return (IRS Form 990) visit our website at [www.conncf.org](http://www.conncf.org) or contact the Finance department at 203-753-1315.



# New Funds

Thank you to the individuals, families and agencies listed below who established new funds at Connecticut Community Foundation in 2019.

Your generosity is an investment in the future of residents of Greater Waterbury and the Litchfield Hills.

## **Anne P. Delo and Rosemary E. Giuliano Fund**

Designated to support the Pomperaug River Watershed Coalition Endowment, Pride Fund, Trustee Fund, and Women's Fund held by Connecticut Community Foundation

## **C. Dana Purrington and Camille R. Purrington Memorial Scholarship Fund**

Established by bequest to provide scholarships for underprivileged young people

## **Dr. and Mrs. Sidney B. Luria Memorial Scholarship Fund**

Established by bequest to provide scholarships for students

## **Gager Family Student Emergency Assistance Fund**

Advised fund established by Sarah Gager

## **J.M. Farrell Fund**

Established by Jacqueline Farrell to be funded by bequest to support programs that promote literacy

## **Litchfield Performing Arts Endowment Fund**

Established to support the long term mission and activities of Litchfield Performing Arts

## **Logan Murphy Mengold Memorial Fund**

Advised fund established by Kristen Murphy Mengold and Jason Mengold

## **Mitchell-Powell-Sarian Fund**

Advised fund established by Karen Powell

## **Otto Funderburk Fund**

Advised fund established by Mark and Leigh Funderburk

## **Pride in the Hills Fund**

Established by Deborah Fuller, Christopher Herrmann and Kevin Jennings to celebrate and improve the lives of LGBTQ people in Greater Waterbury and the Litchfield Hills for generations to come

## **Pride in the Hills Scholarship Fund**

Established to provide scholarships for students who identify as LGBTQ+ or as active allies of the LGBTQ+ community

## **Stephanak Charitable Trust**

To be funded by bequest to support summer educational and recreational experiences for low-income, inner city youth, and to support Greater Waterbury Interfaith Ministries to provide food for those in need

## **The Abojaradeh-Abdelhadi Fund**

Advised fund established by Ahmad Abojaradeh

## **The Humiston Fund**

Advised fund established by Bruce and Nancy Humiston

## **The Larry Behr Charitable Fund**

Established by Lawrence Behr, to be funded by bequest to support designated nonprofits and educational institutions

## **The Larry Behr Designated Fund**

Established by Lawrence Behr to support specific charitable organizations

## **Thompson Family Scholarship Fund**

Established by Donald J. Thompson, Jr. to award scholarships for students graduating from Kennedy High School in Waterbury, CT and planning to attend Central Connecticut State University

## **United Nations Association of Connecticut Scholarship Fund**

Established to award scholarships to students demonstrating academic excellence and commitment to engagement in international issues or the exploration of diplomatic careers





*Waterbury PAL and the Naugatuck River Revival Group were recognized with a 2019 Trustee Fund Award for their innovative and collaborative work in creating the River Brigade. Youth in the River Brigade, led by Kevin Zak and Querino Maia, have spent two summers removing trash from the Naugatuck River.*



# Thank you!

We are deeply grateful to the following donors who entrusted us with their gifts in 2019 to help build a better Greater Waterbury and the Litchfield Hills.

## **Gifts of \$1,000,001+**

Estate of John T. Staver

## **Gifts of \$100,001 to \$1,000,000**

Legacy Waterbury Hospital, Inc.  
Estate of Susan A. Petruzzi  
C. Dana & Camille R. Purrington Trust  
James and Catherine Smith

## **Gifts of \$50,001 to \$100,000**

Estate of Nancy Camp  
The Connecticut Women's Consortium  
Living In Safe Alternatives, Inc.

## **Gifts of \$10,001 to \$50,000**

Anonymous  
Jack and Pam Baker  
Elizabeth and Charles J. Boulier III  
Jana Butterfield  
Keith Butterfield  
Ken Butterfield  
Anne Delo and Rosemary Giuliano  
Easterseals  
Wayne Eisenbaum Charitable Foundation  
Valerie Friedman  
Mark and Leigh Funderburk  
Bruce and Nancy Humiston  
Ion Bank  
Ion Bank Foundation  
The Leever Foundation  
Estate of Sidney Luria  
Kristen and Jason Mengold  
Kelly Parisi  
Estate of Kyungsook K. Petrahai  
Karen Powell  
Kristine Tomey

## **Gifts of \$5,001 to \$10,000**

Ahmad Abojaradeh  
Rachel Albanese  
Lawrence Behr  
Stefani Corsi-Travali and Joseph Dacey Jr.  
Robert Curtis Jr.

Barbara Eler  
Robert Garthwait, Sr.\*  
Ryan Huff  
Rabbi Eric and Dr. Ellen Polokoff  
Philip Samponaro  
Claire L. Steiger  
United Nations Association of Connecticut  
Town of Warren  
Westover School

## **Gifts of \$2,501 to \$5,000**

The Sidley Austin Foundation  
Christopher Berman  
Jonathan and Amy Bernon  
By Request LLC  
Merrilee Chamberlain  
Cly-Del Manufacturing Co.  
Connecticut National Guard Foundation  
Almon B. Dayton Trust  
Dudley and Nonnie Diebold

Margaret Field and David Robinson  
Anne J. Fitzgerald  
Friends of Saint Anne  
Estate of Raymond George  
Gilead Sciences  
Goshen Land Trust  
Jane Whitney Gruson  
Hubbard-Hall Inc.  
Douglas and Megan Johnson  
John and Kathy Kehoe  
Deborah B. McInerney Charitable Fund  
Thomas J. McInerney  
Marcea Morgan  
Onyx Jewelry II, LLC  
Panther Aquatic Club  
Prospect Congregational Church  
Carolyn Setlow and Andrew Shapiro  
Stedman Sweet  
Robert and Susanne Wesson  
WOODCO, LLC

## **Gifts of \$1,001 to \$2,500**

Rachel and Jonathan Albert  
Alexion Pharmaceuticals  
Arnhold Foundation  
Fred Baker and Lisa Powers  
Margaret Baldrige  
Reggie and Judy Beamon  
Daniel and Janine Bedard  
Black Hog Brewing LLC  
Kathy Bower and Rick Richardson  
Marlene G. Brachfeld  
Ralph and Sheila Carpinella  
Kevin Comer  
Attorney Michael K. Conway  
Courtney Davis, Inc.  
Isabelle V. Curtiss  
Darrell and Rosanne Daniels  
Joyce DeCesare  
Dobson Pools  
Dan and Robin Donato



*Members of the Waterbury Pride NAACP Youth Council pose for a photo at the national conference in Detroit. The group received three awards, including the NAACP Youth Council of the Year.*

Ericson Insurance Advisors  
 Michael Feinberg and Ann Merriam Feinberg  
 Andrew Flatt  
 Gager, Bower & Scalzo, LLP  
 Robert and Carlotta Garthwait, Jr.  
 Ethan Geto  
 Kevin and Joan Gibbons  
 The Green Spot LLC  
 Jill and John Gwazdauskas  
 Brian and Susan Henebry  
 Wilson Henley  
 Christopher Herrmann  
 Forest Herron  
 Kevin Jennings  
 JHD Corporation  
 Brian and Karen Jones  
 Michael and Sally Karnasiewicz  
 Estate of Stephen G. Kenney  
 Kinney Woodworking LLC  
 Betsy Krebs  
 The Lang Companies  
 Liberty Bank Foundation  
 Julie Loughran and Brendan Foulois  
 Paul Marcarelli  
 New Preston Wellness  
 John and Nancy Newton  
 Kathie Nitz  
 Bryan Nurnberger  
 Roderic Oneglia and Michael Quadland  
 Rob Parker and Peter Rogness  
 David and Jill Pelletier  
 Post Development LLC  
 Post University Faculty Association  
 Dolores Riollano  
 Salvatore Anthony Hair Studio  
 Lyle Saunders  
 Irene Cannon Schabu  
 Smaller Manufacturers Association of CT, Inc.  
 Domenic and Marilyn Santucci  
 Stephens Design Group  
 Maria Taylor  
 Thomaston Savings Bank  
 Donald J. Thompson, Jr.  
 Alexander and Janet Thomson  
 Traub Lieberman Straus & Shrewsbury LLP  
 Tribury Restaurant Group DBA: Pies & Pints  
 Betty Ann Veillette  
 Kevin Vilke  
 Village Merchants Collective  
 Kimberly Wadman  
 Andrew Ward  
 Waterbury Regional Chamber  
 Patricia Winer

#### **Gifts of \$501 to \$1,000**

Nicole Alger  
 Maxine Arnold  
 Paula Baron  
 Robert and Martha Bernstein  
 Sarah Carberry  
 Carmody Torrance Sandak & Hennessey, LLP  
 Daniel Caron  
 Elizabeth Coe  
 Don and Laura Coffin  
 M. David Cohen MD  
 Cross of Christ Lutheran Church  
 William and Anne Crotti  
 Christopher and Heather Dainiak  
 Davis Auctions Inc.  
 Aiofe Dempsey  
 Perry Egress Group c/o Morgan Stanley Smith Barney  
 Daniel and Elizabeth Esty  
 Diane L. Fountas, MD  
 Elizabeth Frew  
 Marissa Frois  
 Deborah Fuller  
 James Funderburk  
 Carole Gibney  
 Giuliano Richardson & Sfara LLC  
 Anne and Ken Green  
 Honeywell International Charity Matching  
 David Innaimo  
 Emil Isavi  
 Kris and C. Michael Jacobi  
 Lainie Jedlinsky  
 Kent School Corporation  
 Mark Kraus and Regina Duchin Kraus  
 Danielle Lynskey  
 Kate MacKinney  
 Marion Manufacturing Co.  
 Rosanne J. Martino  
 Metallon, Inc.  
 Dana Moreira  
 John Morris  
 Municipal Truck Parts, Inc.  
 Northwest Environmental Water Labs, Inc.  
 Terence O'Connell  
 Amy Parrott  
 Hector and Perfecta Perez  
 J. Rodney Pleasants  
 Richard and Carolyn Povilaitis  
 Michael and Tina Reardon  
 Kevin and Denise Ruppelt  
 Saroj Gulati-Sikand



*Raechel Guest, director of Waterbury's Silas Bronson Library, poses among the stacks. Foundation support has helped Guest improve the library's infrastructure.*

Edward Shaker  
 Richard and Labibe Shaker  
 Pamela Sinel  
 Southbury Youth Baseball  
 South Britain Congregational Church  
 St. Bridget of Sweden Parish Corp  
 James Storale  
 Janet Taylor  
 Laurin Traub  
 Wilson and Annette Trombley  
 Paula Van Ness  
 J. David Veselsky  
 Heidi Vollmer  
 Washington Garden Club  
 AJ and Jodi Wasserstein  
 Linda Wasserstein  
 Ann Zipkin

#### **Gifts of \$250 to \$500**

Doris and Joel Abramson  
 Dennis Adler  
 Christina Amarante  
 American Legion Auxiliary  
 Frank Arcaro

David Asmar  
 Judith Bajgot  
 James and Donna Bannon  
 Betsy Barber  
 Ann Bazos  
 Bedard & Company, PC  
 Alicia Bennett  
 Brian and June Boyd  
 Thomas and Catherine Brunnock  
 Kay Campbell\*  
 Richard G. Carey  
 Carter & Civitello  
 Anthony and Natividad Carter  
 Ellen Carter and Mark Briggs  
 Terri Clark  
 Congregation de Notre Dame  
 Fred D'Amico  
 Francis and Gail DeBlasio  
 Lauren Della Monica  
 Christopher Desiderio  
 Mark and Karen Dost  
 Charlie Dumais  
 John M. Eimer





*Nonprofit leaders, Ion Bank representatives, and Connecticut Community Foundation staff join WATR hosts Tom Chute and Larry Rifkin to kick off the 2019 Give Local Greater Waterbury and Litchfield Hills campaign.*

Emily Littman Eisen  
 Mehdi and Judith Eslami  
 Fairfield County Bank  
 Jacqueline M. Farrell  
 Daisy Cocco DeFilippis  
 David Ferraro  
 The Field Family Foundation Trust  
 First Congregational Church of Watertown  
 Ryan Flis  
 Geraldine and George Foos  
 Lisa Frantzis  
 Ernest and Carolyn Fuller  
 Glenn and Lianne Fuller  
 Allison Fulton  
 Lisa Gerson  
 Michael and Giovanna Giardina  
 Kyle J. Gibbons  
 Justin Golden  
 Heidi Green  
 Ene Riisna Greenfield  
 John Grierson  
 Oz Griebel\*  
 Russell Halley  
 Janet Harris  
 Judith Ann Heller  
 Stephen Herman  
 John Houston  
 Kristen Jacoby  
 Ruth Jaffe

David and Dawn Kalach  
 Brian Keane  
 James and Sally Kernan  
 Graham Klemm  
 LaBonne's Epicure Market  
 Louis and Mary Lamour  
 John and Debra Lanzl  
 Elisha Leavenworth Foundation  
 Laura Legg  
 Patricia Lindenman  
 Robert Livermore  
 John MacInnis  
 Donald and Elena Maclean  
 Carlos Maldonado  
 Joan Maloney  
 Marion Manzo  
 Mary Mother of the Church Parish  
 Alison Masopust  
 J. Thomas and Sandra Massimino  
 Wayne and Betty McCormack  
 Patrick and Kelly McKenna  
 Kathleen McPadden  
 Cynthia Merrick  
 Jayne Millard  
 David and Donna Morales  
 William and Kathy Morton  
 Vita West Muir  
 Patrick and Donna Mulhall  
 Roger Netzer

Lisa Oak  
 Oemcke Chiropractic Acupuncture LLC  
 Beatriz R. Olson, MD  
 Bernadine Orintas  
 Maria Papiro  
 Robert Pedemonti  
 James Pelletier  
 John and Margaret Perotti  
 Pfizer Foundation Matching Gifts  
 Antonio Paulo Pinto  
 Benjamin Probbler  
 Sharon Houle Randall  
 REVV Fitness Club, LLC  
 Tom and Beth Rickart  
 Judith M. Rifkin  
 Rochambeau Middle School  
 Marjorie M. Ross  
 Barbara and Tom Ryer  
 Savings Bank of Danbury  
 Secor, Cassidy & McPartland PC  
 Stephen and Sherry Seward  
 Sabrina Smeltz  
 Southbury Dental Care  
 Leavenworth Sperry Jr.  
 Deborah and Jeffrey Stein  
 Bill and Janet Stokes  
 Linda Strange  
 Anne Strzelecki  
 Thule

Tiger Technologies LLC  
 Lisa Trager  
 Mary Jane McClay Travers  
 United Church of Christ, Southbury  
 John Veltri  
 Victorinox Swiss Army, Inc.  
 Webster Bank  
 Crystal Weed  
 Alan Werner  
 Gordon White  
 Ronald Wislocki  
 Constance Wood

\*DECEASED

#### **IN-KIND GIFTS**

The Judy Black Memorial Park and Gardens  
 City of Waterbury  
 Connecticut by the Numbers  
 Margie Field and David Robinson  
 FM 97.3 WZBG  
 Friends of Topsmead State Forest  
 Deb Gaudette  
 Institute for American Indian Studies  
 John Johnson Art Direction & Design  
 Kathryn S. Kehoe  
 Litchfield Distillery  
 Regina Melo  
 Town of Middlebury  
 Naugatuck Valley Community College  
 Republican American  
 SingOut! CT  
 Southbury Public Library  
 The Taft School  
 WATR 1320 AM  
 Westover School  
 Woodbury Public Library

*To view donors who contributed between \$100 and \$250, please visit [connct.org/annual-reports](http://connct.org/annual-reports).*



The following members of the **1923 Legacy Society** have included Connecticut Community Foundation in their estate plans. Their gifts will create a better future for local residents for generations to come.

Anonymous (11)  
Doris Abramson  
Joel Abramson  
Eleanor Akers  
Elizabeth Andersen\*  
Nina Andersen\*  
Helen Angevine\*  
Marian Baeder\*  
Fred Baker  
Charles Barlow\*  
Michael Baumrind  
Lawrence Behr  
Susan Beris  
Lillian Berland\*  
Max Berland\*  
Martha Bernstein  
Robert Bernstein  
Bertha Brod\*  
Robert Brod\*  
Christopher Brooks  
David Brooks  
Ann Burton  
Miriam Camp\*  
Nancy Camp\*  
Orton Camp, Jr.\*  
Daniel Caron  
Craig Carragan  
George Chadakoff  
Helen Chadakoff  
Merrilee Chamberlain  
Frederick Chessen  
William Cohen  
Alice Cruikshank  
Richard Cullen\*  
Robert Curtis  
Isabelle V. Curtiss  
Priscilla Dannies  
Robert Dannies, Jr.  
Joyce DeCesare  
Anne Delo  
David DeNicolo  
Bart DePetrillo\*

Barbara DeRosa\*  
Frank Devorken\*  
Mary Devorken  
Eleanor DiCorpo\*  
Anna Famiglietti\*  
Richard Faro\*  
Jacqueline Farrell  
Ann Merriam Feinberg  
William Finkelstein\*  
Valerie Friedman  
Helen Frisbie\*  
Deborah Fuller  
Sarah Gager  
Raymond Gamby\*  
Ronald Garfunkel  
Helen Garvey\*  
Phyllis Gebhardt\*  
Rosemary Giuliano  
Lynn Gorman  
Claire Goss\*  
Milton Greenblatt\*  
Jane Gsell  
John Gsell  
Janet Hansen  
Nelson Hart\*  
Jane Wynn Hay\*  
Lynn Franklin-Henry  
Charles Henry  
Forest Herron  
Patricia Herron\*  
George Hopkins, Jr.\*  
Jeanne Hughes\*  
Bruce Humiston  
Nancy Humiston  
Peter Jacoby  
Susan Jefferson  
Lucille Johnson\*  
Helen Johnston  
Alfred Joyell  
Everett Kaelber  
Jamil Karsh\*  
Stephen Kenney

Stephen Ketterer  
Augusta Kramer\*  
Betsy Krebs  
Marie Kunkel\*  
Angela LaMoy\*  
Raymond LaMoy\*  
Gertrude Larson\*  
Herbert Larson\*  
Elaine Lau  
Richard Lau  
Margaret Laurencelle  
Irene LaVigne  
Marita Lawlor\*  
Harold Leever\*  
Ruth Ann Leever\*  
Carolyn Lieber  
William Lieber  
Margaret Llano\*  
Irene Luria\*  
Sidney Luria\*  
Anne Madden\*  
Betsy Manning  
Ecton Manning  
Ingrid Manning  
Elsie Mannweiler\*  
Mark Margiotta\*  
Jeanette Matzkin\*  
Elizabeth McCormack  
Wayne McCormack  
Marie-Jeanne McDuff\*  
Josephine McMillen\*  
Russell McMillen\*  
Anne Melgers\*  
Georgianna  
Middlebrook\*  
James Miele  
John Miller  
Daniel Millett\*  
Mary Millett  
Marcea Morgan  
Maurice Mosley  
Vita West Muir

Dorothy Murnane  
Joann Narkis  
Robert Narkis  
Linda Nelson\*  
Mary Greene Nelson\*  
John Palesty  
Christopher Parker  
Molly Parker  
Frederick Perry\*  
Victor Persbacher\*  
Jean Peterson  
W. Scott Peterson  
Kyungsook Petrahai\*  
Susan Petruzzi\*  
Antonio Paulo Pinto  
Lisa Powers

Camille R. Purrington\*  
Dana Purrington\*  
Frank Quadrato\*  
Paul Reder  
Edith Reynolds  
Dolores Riollano  
Sarah Robin\*  
Vera Robin\*  
David Robinson  
Ethel-Anne Roome  
Marjorie Ross  
Dorothy Rowland\*  
Ella Emery Rutledge\*  
Philip Samponaro  
DeBare Saunders  
Robert Sclafani

Andrew Shapiro  
Justine Smith\*  
Catherine Sperry  
Sylvia Sprecker  
John Staver\*  
Daniel Stowell  
Lucinda Hunt-Stowell\*  
Lydia Straus-Edwards  
Lydie Strobbridge\*  
Clarice Sullivan  
John Sullivan, III\*  
Marian Svetlik Andrews\*  
Patricia Sweet  
Adele Taylor  
Norman Taylor\*  
Marcia Tejada

Donald Thompson  
Alexander Thomson  
Janet Thomson  
Walter Torrance, Jr.\*  
Paula Van Ness  
Fern Verriker\*  
J. David Veselsky  
Stanford Warshasky\*  
Abby Wells  
Edmund White  
Leslie White\*  
Zemma White  
N. Patricia Yarborough\*

\*DECEASED



*Ann Merriam Feinberg at the Foundation's 2019 Summer Social and Annual Meeting.*



Established in 1923, Connecticut Community Foundation was created by and for the people of Greater Waterbury and the Litchfield Hills. Serving a 21-town region, the Foundation provides leadership in addressing the community's critical issues, strengthens local nonprofit organizations through grants and technical assistance programs, and works with individuals, families and corporations to steward charitable and scholarship funds.

## OUR BOARD OF TRUSTEES\*

Reginald Beamon	Douglas Johnson	Rabbi Eric Polokoff
Daniel Bedard	Elizabeth Johnson	Carolyn Setlow
Kathy Bower	Brian Jones	Stephen Seward
Barbara Bradbury-Pape	Kathryn Kehoe	Kathy Taylor
Valerie Friedman	Kathleen McPadden	
Michael Giardina	John Newton	
Brian Henebry	David Pelletier	

\*Includes trustees who served during any part of 2019

## OUR STAFF\*

Mark Berardi DEVELOPMENT OFFICER	Carah Menard ADMINISTRATIVE ASSISTANT
Joshua Carey DIRECTOR OF GRANTS MANAGEMENT	Cynthia Merrick DIRECTOR OF DEVELOPMENT
Ellen Carter VICE PRESIDENT OF PROGRAM AND STRATEGY	Debra Orrino SENIOR FINANCE AND ADMINISTRATION OFFICER
Sarah Edelson Baskin ASSISTANT TO THE PRESIDENT AND CEO	Tricia Poirier SPECIAL PROJECTS COORDINATOR
Melissa Lopata DIRECTOR OF COMMUNICATIONS	Tallitha Richardson SENIOR PROGRAM AND SCHOLARSHIP ASSOCIATE
Julie Loughran PRESIDENT AND CEO	Barbara Ryer DIRECTOR OF FINANCE AND ADMINISTRATION
Patrick McKenna PROGRAM OFFICER	Bilal Tajildeen PROGRAM OFFICER

\* As of December 31, 2019



*Kevin Taylor, Neighborhood Housing Executive Director, chats with Doug Johnson at the Foundation's 2019 Summer Social and Annual Meeting.*

## Congratulations and Appreciation for Debbie Stein

Deborah Stein came to the Foundation in 2011 bringing decades of experience in older adult support services and an understanding of the local, state, and national landscape of aging. She applied her knowledge and talents to shape the work of the East Hill Woods Fund, which was established to support programs and services for older adults throughout Greater Waterbury and the Litchfield Hills. Over the years, Debbie created a robust, impactful, and person-centered portfolio that distributed nearly \$4 million in her time as the program officer for the Pathways for Older Adults program.



Among her many accomplishments at the Foundation, her vision and tireless effort in creating Bringing Resources to Action to Serve Seniors, or BRASS, is one that shines bright. By building strong, collaborative relationships with service providers and the City of Waterbury, BRASS brings evidence-based health and social programming to older adults visiting many of Waterbury's "BRASS sites." Even in retirement, Debbie continues her leadership in the aging sector as the chair of the Connecticut Healthy Living Collective at Connecticut Community Care. We are grateful to Debbie for her vision, her talent, and her energy, which will continue to benefit our region for many years to come.



*The Staver Fund at Connecticut Community Foundation helps to finance the general operations of the Greater Waterbury YMCA, expanding the breadth and quality of its programs for preschool and school-aged children, and helping more families access them regardless of ability to pay.*

**PHOTO CREDITS:**

COVER: STEVEN VALENTI, REPUBLICAN-AMERICAN

INSIDE FRONT COVER: NICK CHAPMAN

PAGES 2-3: ASAP!

PAGE 4: JAKE KOTEEN PHOTOGRAPHY

PAGE 5: PRIDE IN THE HILLS

PAGE 7: LINA ABOJARADEH

PAGE 10 (LEFT TO RIGHT, TOP TO BOTTOM):

GRASSROOTS TRAINING – FOUNDATION STAFF;

WELLMORE BEHAVIORAL HEALTH – JAKE KOTEEN PHOTOGRAPHY;

MAKE MUSIC WATERBURY – FOUNDATION STAFF;

BOYS & GIRLS CLUB OF GREATER WATERBURY;

MAKE MUSIC WATERBURY– FOUNDATION STAFF;

WATERBURY PAL RECEIVES TRUSTEE FUND AWARD – JAKE KOTEEN

PHOTOGRAPHY; DAVE ROTATORI, ION BANK PRESIDENT AND JULIE

DISCUSS PLANS FOR GIVE LOCAL 2019 – FOUNDATION STAFF;

PAGE 12: WOMEN'S GIVING CIRCLE– FOUNDATION STAFF

PAGE 15: PHOTO BY ZAK ROBUSHI COURTESY OF WATERBURY PAL

PAGE 16: ARLANDA BRANTLEY

PAGE 17: JAKE KOTEEN PHOTOGRAPHY

PAGE 18: FOUNDATION STAFF

PAGE 19: JAKE KOTEEN PHOTOGRAPHY

PAGE 20: TOP- JAKE KOTEEN PHOTOGRAPHY;

DEBBIE STEIN – FOUNDATION STAFF

INSIDE BACK COVER: JAKE KOTEEN PHOTOGRAPHY

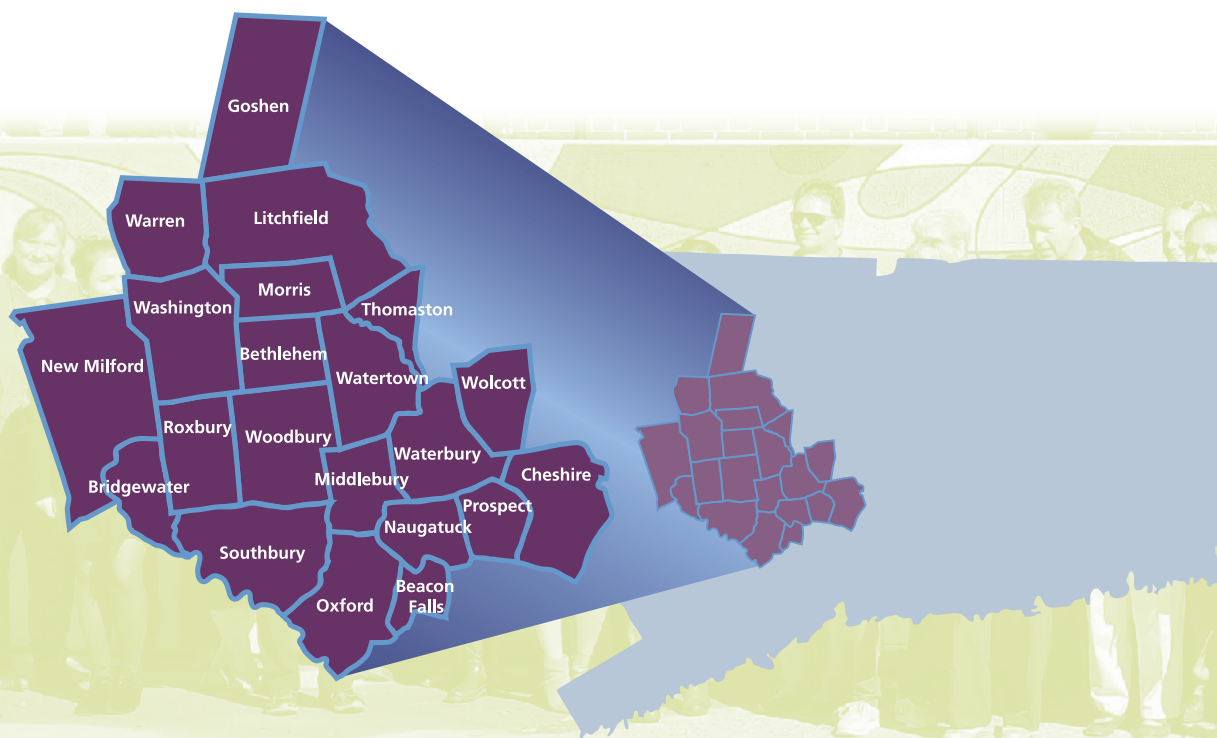






43 Field Street  
Waterbury, CT 06702  
203.753.1315

[www.conncf.org](http://www.conncf.org)



## Who We Serve

As the community foundation for the 21-town Greater Waterbury and Litchfield Hills region, we focus our resources and grantmaking in these towns.