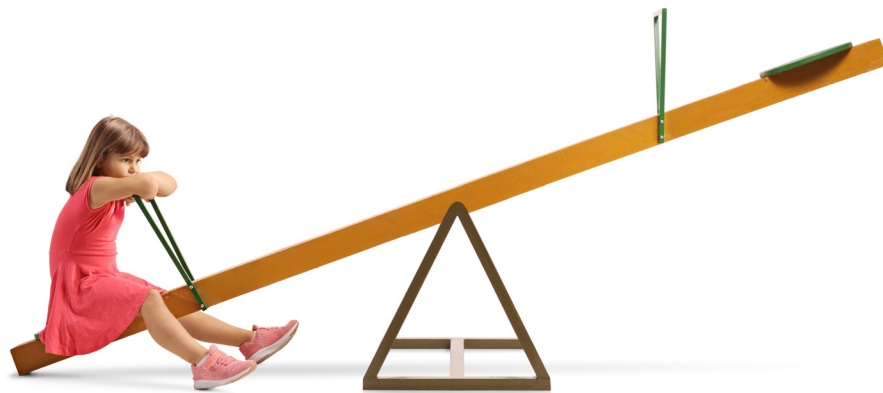




# Is Connecticut A Great Place To Be A Child?



***Connecticut is the second richest state in the country (based on per capita income), yet nearly 1 in 10 children grow up in poverty.***

Connecticut Community Foundation has joined with community foundations and other change leaders across the state in leading local efforts to raise awareness, convene partners, and advocate on behalf of our state's children who do not have what they need to thrive.

Today, you'll hear insights from local experts about the impact of child poverty in our area along with possible solutions to *End Child Poverty Now*.

## **A Public Forum presented by Connecticut Community Foundation**

*June 6, 2025 at Connecticut State Community College, Naugatuck Valley*

### **8:30 – 9:00 a.m.**

Registration  
and refreshments

*Note:  
This program is  
being recorded  
for video.*

### **9:00 – 10:30 a.m.**

Community Data presentation with  
Mark Abraham, *DataHaven*

Panel Discussion moderated  
by Ginny Monk, *CT Mirror*

Questions and Answers

### **10:30 – 11 a.m.**

Refreshments  
available

Informal networking

# Is Connecticut A Great Place To Be A Child?

## HOST



**Kathy Taylor**

President and CEO,  
Connecticut Community  
Foundation

## PRESENTER



**Mark Abraham, MPH**

Executive Director,  
DataHaven

## MODERATOR



**Ginny Monk**

Children's Issues and Housing  
Reporter, *CT Mirror*

## PANELISTS



**Emily Byrne, MPA**

Executive Director,  
CT Voices for Children



**Chelsey Harris**

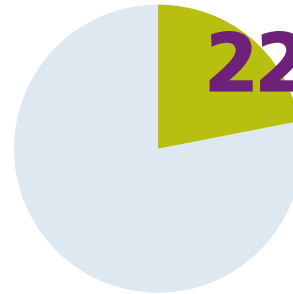
Director of Early  
Care & Education,  
Waterbury Bridge to Success



**Rashida Rattray**

Education and Outreach  
Coordinator, Connecticut Fair  
Housing Center

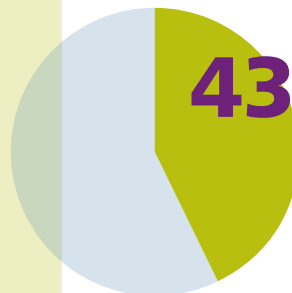
## Poverty In Our State And Our Region



### 22% Poverty Rate In The City of Waterbury

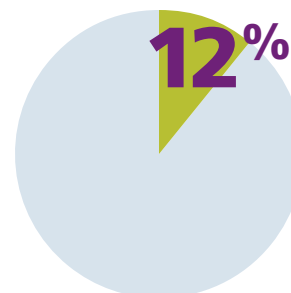
In the city of Waterbury,  
the poverty rate is more  
than double that of the  
State of CT (10%) or the  
Greater Waterbury  
region (10%).

In one of the wealthiest states in the nation, Connecticut—and our own Greater Waterbury and the Litchfield Hills region—children bear some of the deepest poverty. These harsh economic realities are felt by our local children and the families they depend upon. Many factors contribute to a life of poverty in our region: access to healthy food and housing, educational support, healthcare and childcare opportunities, to name only a few. Inequitable access to basic necessities ties directly to a lower level of lifetime opportunity and contributes to generational cycles of poverty.



### 43% Cost-Burdened Households

Nearly half of Waterbury's households  
are cost-burdened, meaning they  
spend at least 30% of their income  
on housing costs.



12% of adults ran out of money  
to pay for housing in the  
past year—about double  
the share that ran out of  
money to pay for housing  
when the survey was  
conducted in 2015.



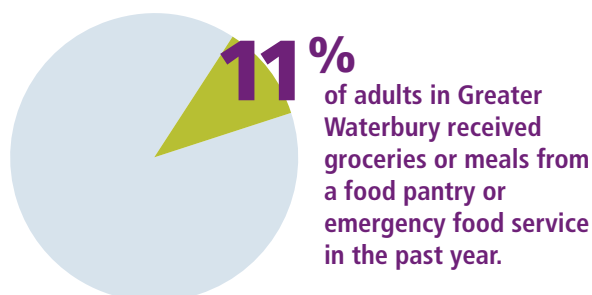
### 2024 Food Security Rates for Adults:

|  |     |
|--|-----|
| In Connecticut                                 | 18% |
| In Greater Waterbury                           | 21% |
| In the City of Waterbury                       | 34% |
| In Greater Waterbury, living with children     | 29% |
| In the City of Waterbury, living with children | 40% |



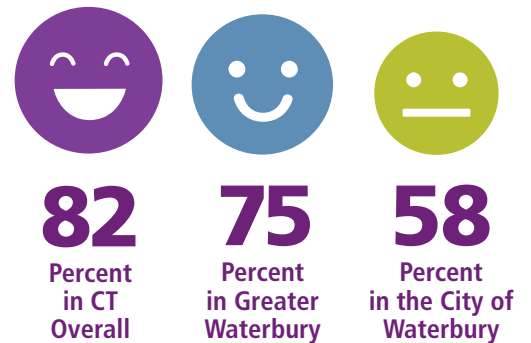
### Demographics Experiencing Food Insecurity in Greater Waterbury:

|                     |     |
|---------------------|-----|
| Men                 | 15% |
| Women               | 25% |
| Straight            | 19% |
| LGBTQ               | 34% |
| White, Non-Hispanic | 14% |
| Latino              | 35% |
| Black               | 40% |



## Satisfaction With Where They Live

Adults were asked if they were generally satisfied with the city or area where they live.



## The Data

The data in this program was compiled from DataHaven's Town Equity Reports and the 2024 DataHaven Community Wellbeing Survey (DCWS).

The 2024 DCWS conducted interviews with 7,500 randomly-selected adults throughout Connecticut on topics most important to community well-being. In 2024, close to 1,000 Greater Waterbury adults were selected to participate. Results are weighted to represent the total adult population in each town.

The Connecticut Community Foundation supports DataHaven because having accurate, high-quality data about the region helps understand trends, informs planning and supports fundraising efforts.

# End Child Poverty Now

**More than 100 organizations throughout the state have come together and pledged to End Child Poverty Now!**



The campaign is a unified platform for advocacy behind a common vision: an economically robust Connecticut where no child experiences the debilitating effects of poverty. This nonprofit advocacy collaborative engages lawmakers and policy influencers to promote and enact policies that address the root causes of child poverty, including income inequality, access to healthcare, safe and affordable homes, and quality education.

## How can you help?

- **Take the pledge** to End Child Poverty Now! Contact Sarah Edelson at [sedelson@conncf.org](mailto:sedelson@conncf.org) for more information.
- **Donate** to support our advocacy and community development efforts, or other charitable causes you care about. Visit [conncf.org/donate](https://conncf.org/donate)
- **Engage with us!** There are many opportunities to get involved in our work to make Greater Waterbury and the Litchfield Hills a place where everyone can thrive. Visit [conncf.org/ways-to-engage](https://conncf.org/ways-to-engage) to find out how.



## About The Foundation

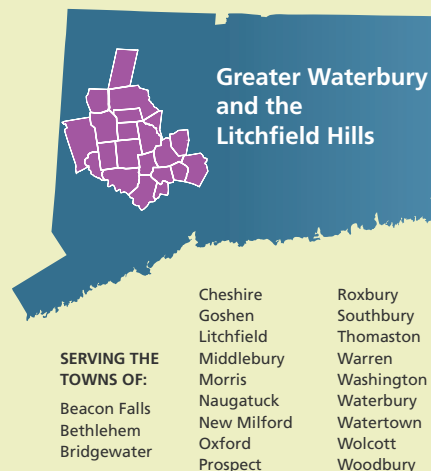
*Established in 1923, Connecticut Community Foundation was created by and for the people of Greater Waterbury and the Litchfield Hills. The Foundation works to address the community's critical issues by awarding over \$6 million annually in competitive grants to local nonprofits and over \$1 million in scholarships to local college-bound students.*

*Our work prioritizes challenges in Arts and Culture; Building Equitable Opportunity; Grassroots Leadership; Health and Environmental Justice; Older Adult Programs; and Strengthening Nonprofits. In addition, the Foundation is the host and sponsor of Give Local Greater Waterbury & Litchfield Hills, which celebrated its 13th year with a record-breaking \$2.5 million raised in 36 hours for local nonprofits.*

*All of these programs benefit local residents and support our vision to make our region a more vibrant and prosperous community where all residents have what they need to thrive.*

## Mission

***To foster an equitable and inclusive community in Greater Waterbury and Litchfield Hills by inspiring generosity, supporting organizations, and cultivating effective leaders.***



**Online at [conncf.org](https://conncf.org)**